

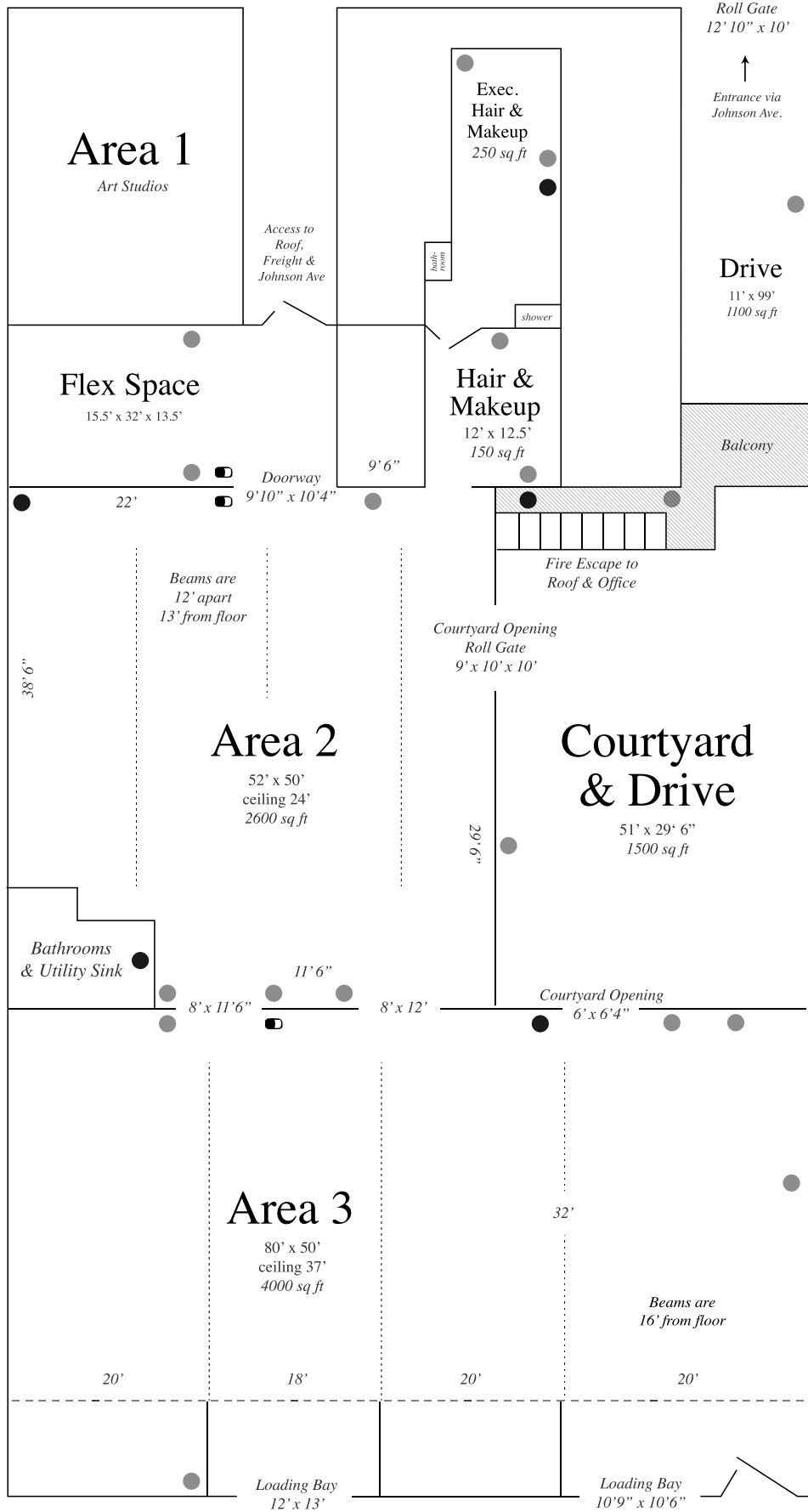
THE  
1896

THE1896.COM

STAGE ENTRANCE  
215 Ingraham Street  
Brooklyn NY 11237

MAILING ADDRESS & ART STUDIO ENTRANCE  
592 Johnson Avenue  
Brooklyn NY 11237

T 718.451.6531  
E [the1896@gmail.com](mailto:the1896@gmail.com)



- ☐ LIGHT SWITCH
- POWER SOURCE
- WATER SOURCE



## **AREA 3**

- 4,000 sq ft (Approx. 80'w x 50'l)
- Ceiling Height: 37' (30' steel-girder ceiling, with 7' skylights)
- Load-bearing Beams: 16' from floor, 18' – 20' apart
- 2 Loading bays: 11' x 12'h and 13' x 15'h
- Block-able Skylights (see FAQ)
- Connects to 2600 sq. ft. Courtyard and Drive, 2600 sq ft Area 2,
- Fully Heated/ Vented
- Suitable for flooding - water source on stage
- Suitable for pyrotechnics (concrete/brick construction)
- 300 amp Cam-lok box (as well as 300 amps in Area 2), two separate 30 amp lines and outlets throughout (see FAQ)
- On-site distro package available for rent – please check with staff regarding availability

## **AREA 2**

- 2,600 sq ft [Approx. 52' x 50']
- Ceiling Height: 24' floor to A-Frame ceiling
- Load-bearing Beams: 13' from floor, 12' apart
- Ground Level/ Drive In (through Courtyard or A3)
- Loading Bay to Courtyard (8' x 10' h) - manual
- Accessible via AREA 3 loading bays
- Quick and easily Block-able Skylights
- Connects to 2600 sq. ft. Courtyard and Drive, 4000 sq ft Area 3
- Connects to Hair & Make-up room, VIP Vanity Room and 500 sq foot 'Flex Space'
- Fully Heated/ Vented
- Suitable for flooding - water source on stage
- Suitable for pyrotechnics (concrete/brick construction)
- 300 amp Cam-lok box (as well as 300 amps in Area 3) and outlets throughout (see FAQ)
- On-site distro package available for rent – please check with staff regarding availability

## **COURTYARD AND DRIVE**

- 1500 sq ft Courtyard/ 1100 sq ft Drive [30'w x 51'l / 11'w x 99'l]
- Drive opens to Johnson Avenue (via loading bay 10' x 10.5' h)
- Enclosed Drive-in Courtyard - 100% private
- Water Source
- Fire Escape/ Balcony

## HMU

- 150 sq ft
- Beauty Bar with Vanity Stools
- Adjustable Lighting
- Heat and A/C

## EXEC HMU

- 250 sq ft
- Private Vanity/Bathroom/Sink/Shower
- Adjustable Lighting
- Heat and A/C

## FLEX SPACE

- 500 sq foot
- Ceiling Height: 13.5'
- Concrete and Brick Private Room
- Available for production/green room/ wardrobe/set builds.
- Available by the hour or day/week.
- Set up for Seamless

## ROOF

- Large 8,000 sq ft roof
- Northern view of Manhattan
- Southern view of our Smokestack and Enclosed Courtyard
- Load in via Johnson Ave.
- Rustic/brick Stairwell

## FREIGHT ELEVATOR

- Opens to Johnson Ave on 1st floor
- Size: 5'7" x 11 x 7'8"
- Natural Light from above
- Fully inspected

## TWO STAIRWELLS

- Rusite/Brick with Natural Light
- Marble/Finished Stairs

## LOFT APARTMENT

- 1500 sq ft
- Sunny private/ window-lined two-bedroom lofted apartment available for shoots
- 2 Bedrooms, Studio/Library, Living Room, Kitchen, Full Bathroom
- Garden Patio

## ART STUDIOS (AREA 1)

- 30 artist studios, from 135 sq ft -1500 sq ft
- Ceiling Height: 12'-14'
- White Plaster walls/ Wood or Concrete floors
- Many with Natural Light/ Windows
- Available for yearly leases
- Empty Artist Studios available for shooting on occasion (inquire for sizes and availability)
- Operating as furnished artist studios available for shoots (at artist's discretion)
- Art Rentals Available (Painting, Sculpture, Drawing, Photo, Print)